

IBIS GOLF AND COUNTRY CLUB PLAT NO. 23

A PORTION OF SECTION 24, TOWNSHIP 42 SOUTH, RANGE 41 EAST,
CITY OF WEST PALM BEACH, PALM BEACH COUNTY, FLORIDA

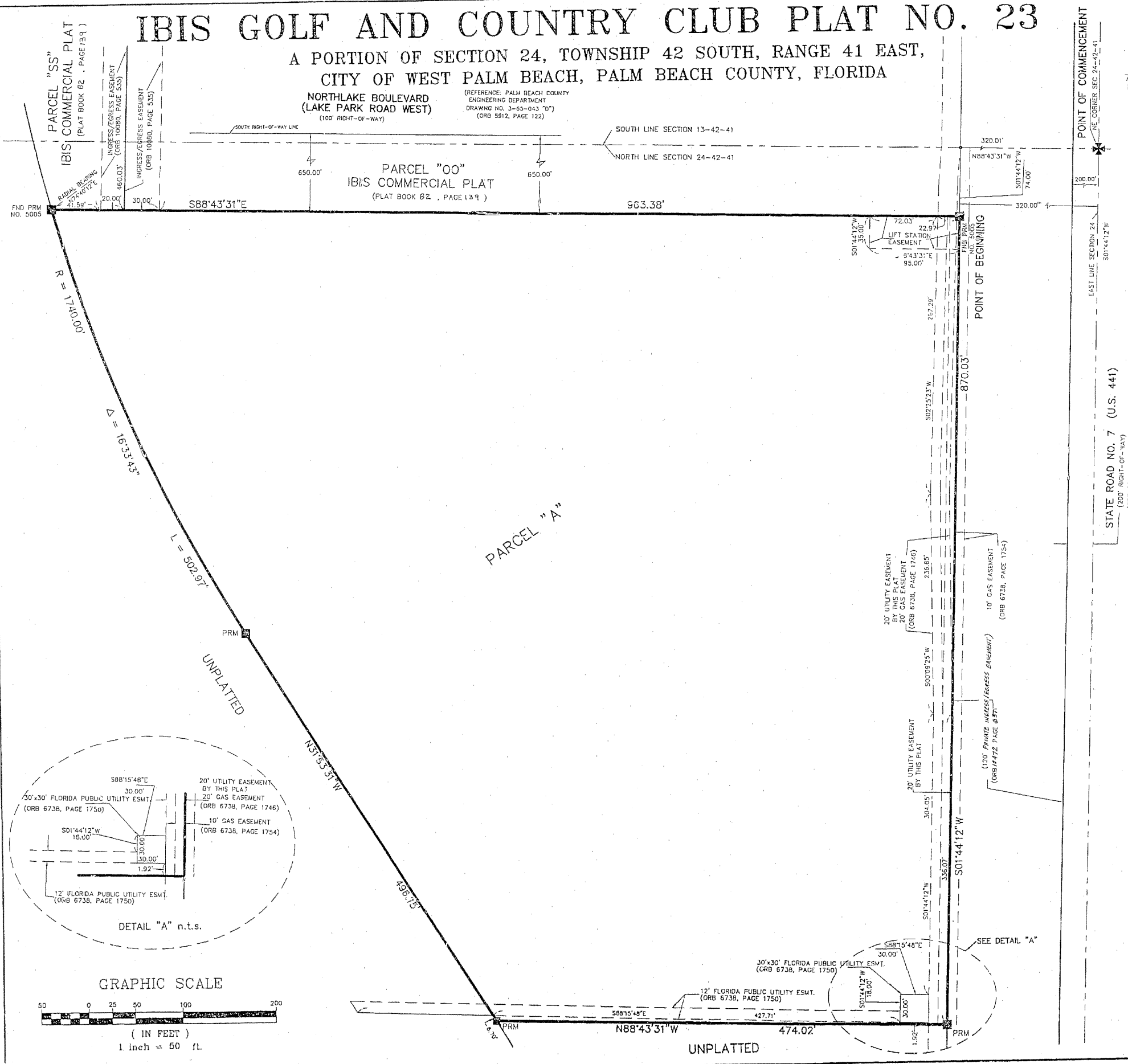
NORTHLAKE BOULEVARD
(LAKE PARK ROAD WEST)
(100' RIGHT-OF-WAY)

(REFERENCE: PALM BEACH COUNTY
ENGINEERING DEPARTMENT
DRAWING NO. 3-65-043 "D")
(ORB 5912, PAGE 122)

PREPARED BY
DAVID P. LINDLEY
OF
CAULFIELD and WHEELER, INC.
ENGINEERS - PLANNERS - SURVEYORS
7301-A WEST PALMETTO PARK ROAD, SUITE 100A
BOCA RATON, FLORIDA 33433 - (561)392-1991
JANUARY - 1998

STATE OF FLORIDA
COUNTY OF PALM BEACH
THIS PLAT WAS FILED FOR
RECORD AT _____ M.
THIS _____ DAY OF _____
A.D. 1998 AND DULY RECORDED
IN PLAT BOOK _____ ON
PAGES _____ AND _____
DOROTHY H. WILKEN
CLERK CIRCUIT COURT

SHEET 2 OF 2



SURVEY NOTES:

- IN THOSE CASES WHERE EASEMENTS OF DIFFERENT TYPES CROSS OR OTHERWISE COINCIDE, DRAINAGE EASEMENTS SHALL HAVE FIRST PRIORITY, UTILITY EASEMENTS SHALL HAVE SECOND PRIORITY, ACCESS EASEMENTS SHALL HAVE THIRD PRIORITY, AND ALL OTHER EASEMENTS SHALL BE SUBORDINATE TO THESE, WITH THEIR PRIORITIES BEING DETERMINED BY USE RIGHTS GRANTED.
- BUILDING SETBACK LINES SHALL BE AS REQUIRED BY CURRENT CITY OF WEST PALM BEACH ZONING REGULATIONS.
- NO BUILDINGS OR ANY KIND OF CONSTRUCTION OR TREES OR SHRUBS SHALL BE PLACED ON DRAINAGE EASEMENTS, EXCEPT DRIVEWAYS.
- APPROVAL OF LANDSCAPING ON UTILITY EASEMENTS, SHALL BE ONLY WITH APPROVAL OF ALL UTILITIES OCCUPYING SAME.
- BEARINGS SHOWN HEREON ARE RELATIVE TO ASSUMED DATUM BASED ON THE SOUTH LINE OF SECTION 13-42-41 BEARING N88°43'31"W
- P.R.M. - INDICATES 4" x 4" x 24" PERMANENT REFERENCE MONUMENT MARKED NO. 5005.
- U.E. - INDICATES UTILITY EASEMENT.
- ORB - OFFICIAL RECORDS BOOK.
- THERE MAY BE ADDITIONAL RESTRICTIONS THAT ARE NOT RECORDED ON THIS PLAT THAT MAY BE FOUND IN THE PUBLIC RECORDS OF PALM BEACH COUNTY.
- NOTICE: THIS PLAT, AS RECORDED IN ITS GRAPHIC FORM, IS THE OFFICIAL DESCRIPTION OF THE SUBDIVIDED LANDS DESCRIBED HEREIN AND WILL IN NO CIRCUMSTANCES BE SUPPLANTED IN AUTHORITY BY ANY OTHER GRAPHIC OR DIGITAL FORM OF THE PLAT. THERE MAY BE ADDITIONAL RESTRICTIONS THAT ARE NOT RECORDED ON THIS PLAT THAT MAY BE FOUND IN THE PUBLIC RECORDS OF PALM BEACH COUNTY.